



Crop Progress and Condition

NATIONAL AGRICULTURAL STATISTICS SERVICE

United States Department of Agriculture • Washington, DC 20250

Northwest Regional Field Office • Olympia, WA 98507

Ag Statistics Hotline: 1-800-727-9540 • www.nass.usda.gov



Released: April 28, 2025
Week Ending: April 27, 2025

In Cooperation with...

- University of Idaho Extension
- Idaho State Department of Agriculture
- Oregon State University Extension Service
- Oregon Department of Agriculture
- Washington State University Extension
- Washington State Department of Agriculture
- USDA, Farm Service Agency
- USDA, Natural Resources Conservation Service

Regional Contacts

Phone: 1-800-435-5883

Email: nassrfonwr@usda.gov

- Washington – Dennis Koong, Regional Director
- Idaho – Ben Johnson, State Statistician
- Oregon – Dennis Koong, Regional Director
- Alaska – Andrew Brosier, State Statistician

This report contains the results from the **Crop Progress and Condition** weekly survey. The data collected each week is from respondents across the region whose occupations provide them opportunities to discuss agricultural production with farmers in their counties as well as to make visual observations. We thank all who have contributed to this report.

The USDA NASS National Crop Progress release is a more detailed report including crop progress and condition at the National level. You can locate that release [here](#).

Week Ending: April 27, 2025

According to the National Agricultural Statistics Service, there were 6.8 days suitable for fieldwork in Idaho for the week. Temperatures were average to above normal throughout the State. In Oregon, there were 6.6 days suitable for fieldwork. Temperatures were average to above normal throughout the State. There were 7.0 days suitable for fieldwork in Washington and good weather continued for planting progress.

Soil Moisture Condition — Idaho, Oregon, and Washington: Week Ending 04/27/25

Item and State	Very short	Short	Adequate	Surplus
	(percent)	(percent)	(percent)	(percent)
Topsoil moisture				
Idaho	-	11	86	3
Oregon	3	12	81	4
Washington.....	8	14	75	3
Subsoil moisture				
Idaho	-	8	88	4
Oregon	3	9	82	6
Washington.....	9	12	78	1

- Represents zero.

Pasture, Range, and Crop Condition — Idaho, Oregon, and Washington: Week Ending 04/27/25

Crop and State	Very poor	Poor	Fair	Good	Excellent
	(percent)	(percent)	(percent)	(percent)	(percent)
Pasture and range					
Idaho.....	2	10	26	40	22
Oregon.....	7	11	27	40	15
Washington.....	1	3	29	67	-
Winter wheat					
Idaho.....	-	2	26	69	3
Oregon.....	3	10	29	45	13
Washington.....	4	7	14	65	10
Winter canola					
Idaho.....	-	2	23	75	-
Washington.....	4	22	52	16	6

- Represents zero.

Crop Progress — Idaho: Week Ending 04/27/25

Crop and activity	Percent completed			
	This week	Last week	Last year	5 Year average
Spring wheat planted	71	54	70	57
Spring wheat emerged	28	15	27	20
Barley planted	67	52	63	56
Barley emerged	26	13	21	21
Oats planted	48	36	48	43
Oats emerged	13	5	10	15
Spring canola planted	41	21	(NA)	(NA)
Spring canola emerged	14	1	(NA)	(NA)
Potatoes planted	30	22	30	32
Onions planted	94	77	94	94
Onions emerged	52	23	43	47
Sugarbeets planted	93	83	60	74
Sugarbeets emerged	20	10	1	14
Field corn planted	10	3	20	12
Dry edible beans planted	23	8	30	(NA)
Dry edible peas planted	49	39	54	52
Dry edible peas emerged	15	7	8	15

(NA) Not available.

Crop Progress — Oregon: Week Ending 04/27/25

Crop and activity	Percent completed			
	This week	Last week	Last year	5 Year average
Winter wheat headed	-	-	-	1
Spring wheat planted	94	83	94	(NA)
Spring wheat emerged	59	36	57	60
Barley planted	91	80	85	78
Barley emerged	58	27	48	47
Oats planted	78	62	88	73
Oats emerged	35	14	42	39
Potatoes planted	77	60	77	69
Potatoes emerged	22	11	29	(NA)
Onions planted	94	75	94	(NA)
Onions emerged	50	25	54	50
Sugarbeets planted	95	75	(NA)	(NA)
Sugarbeets emerged	50	10	76	52
Field corn planted	36	18	35	36
Field corn emerged	2	(NA)	(NA)	(NA)
Dry edible peas planted	95	75	92	(NA)
Dry edible peas emerged	63	27	56	51

- Represents zero.

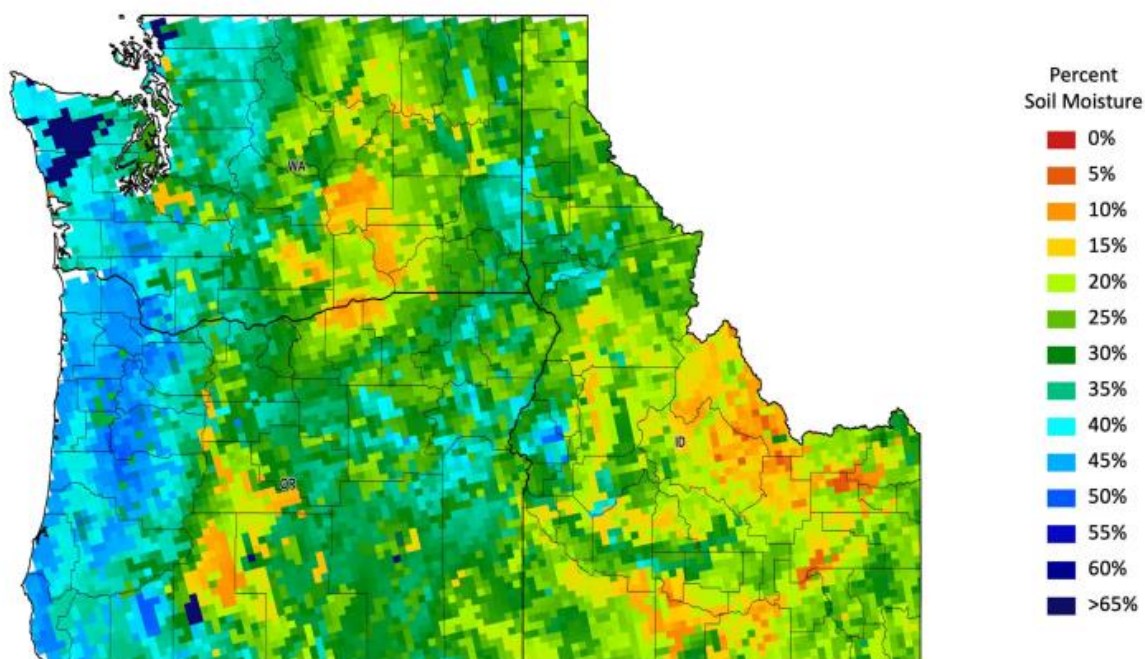
(NA) Not available.

Crop Progress — Washington: Week Ending 04/27/25

Crop and activity	Percent completed			
	This week	Last week	Last year	5 Year average
Spring wheat planted	79	57	74	76
Spring wheat emerged.....	32	12	35	42
Barley planted.....	68	51	67	66
Barley emerged	20	8	21	27
Spring canola planted	60	41	(NA)	(NA)
Spring canola emerged.....	15	3	(NA)	(NA)
Potatoes planted.....	65	50	76	60
Potatoes emerged	10	5	6	7
Onions planted	72	56	82	67
Onions emerged	17	5	20	15
Field corn planted	25	10	23	27
Field corn emerged.....	1	(NA)	(NA)	(NA)
Dry edible beans planted	35	15	46	(NA)
Dry edible beans emerged.....	1	(NA)	(NA)	(NA)
Dry edible peas planted	40	25	39	49
Dry edible peas emerged.....	10	1	8	11

(NA) Not available.

Northwest Subsoil Moisture Map for Week Ending April 20, 2025



The Soil Moisture Active Passive (SMAP) provides measurements of soil moisture in the root zone as a weekly average, represented by pixels. Each pixel represents 9 by 9 kilometer plot or about 20,000 acres. The SMAP data measures soil moisture in cubic centimeters of water/cubic centimeters of soil. The scale represents the percent of water in a given volume of soil. More information and additional mapping is available on Crop-CASMA at <https://nassgeo.csiss.gmu.edu/Crop-CASMA/>



Access to NASS Reports

For your convenience, you may access NASS reports and products the following ways:

- All reports are available electronically, at no cost, on the NASS website <http://www.nass.usda.gov>
- Both national and state specific reports are available via a free e-mail subscription. To set-up this free subscription, visit <http://www.nass.usda.gov>. Hover over the "Publications" drop down. Under "Receive reports by Email" section in the lower right corner, select the report(s) you would like to receive.

For more information on NASS surveys and reports, call the NASS Agricultural Statistics Hotline at (800) 727-9540, 7:30 a.m. to 4:00 p.m. ET, or e-mail: nass@usda.gov